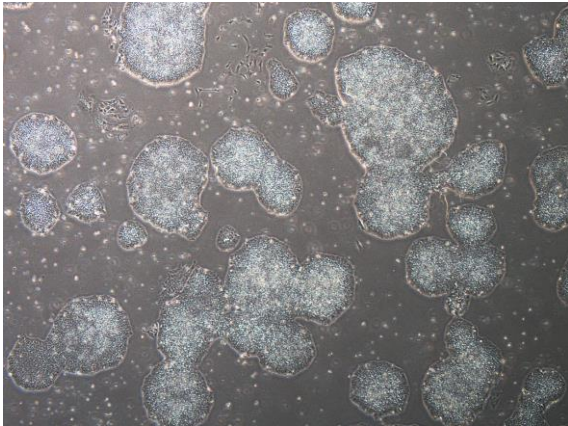
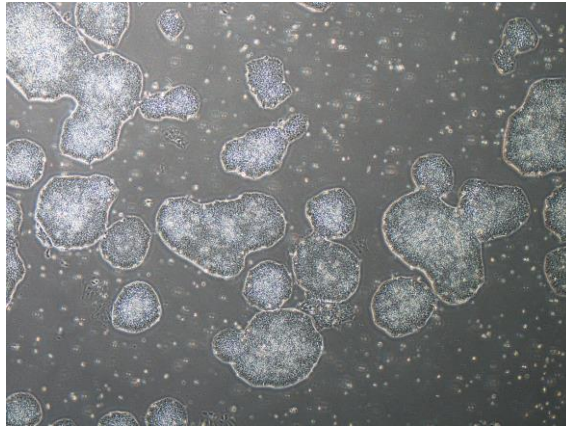


【 CiRA-j-1562 】 Morphology of iPSC colonies

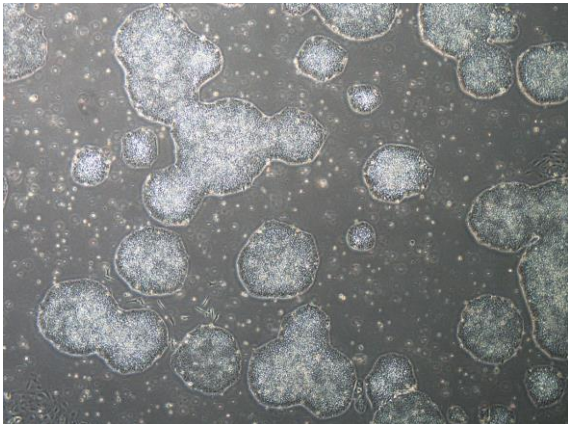
CiRA-j-1562-A: passage-2



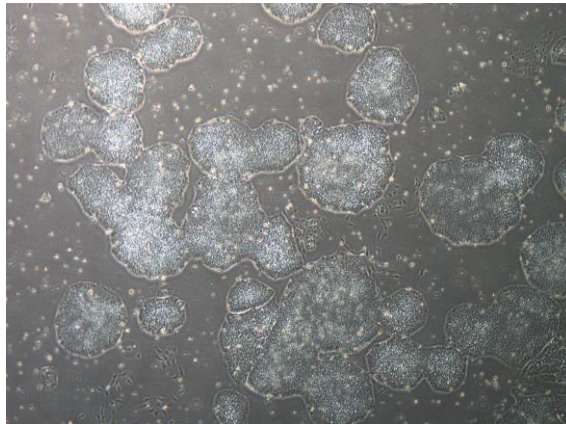
CiRA-j-1562-B: passage-2



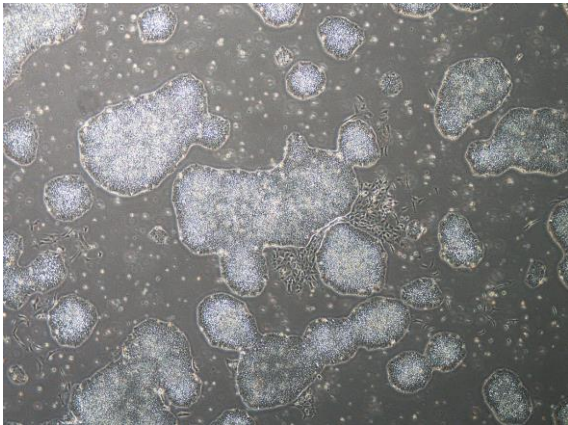
CiRA-j-1562-C: passage-2



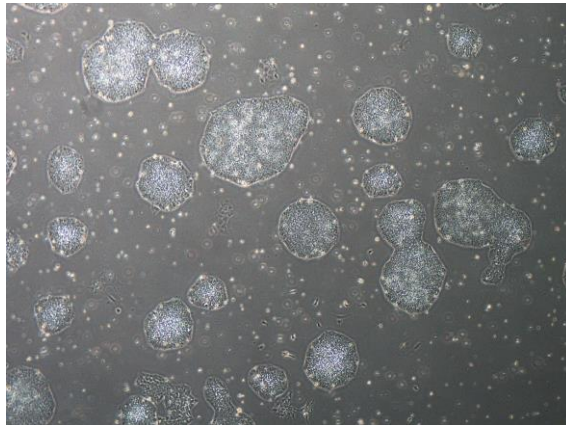
CiRA-j-1562-D: passage-2



CiRA-j-1562-E: passage-2



CiRA-j-1562-F: passage-2



(All images were captured at 4x magnification)